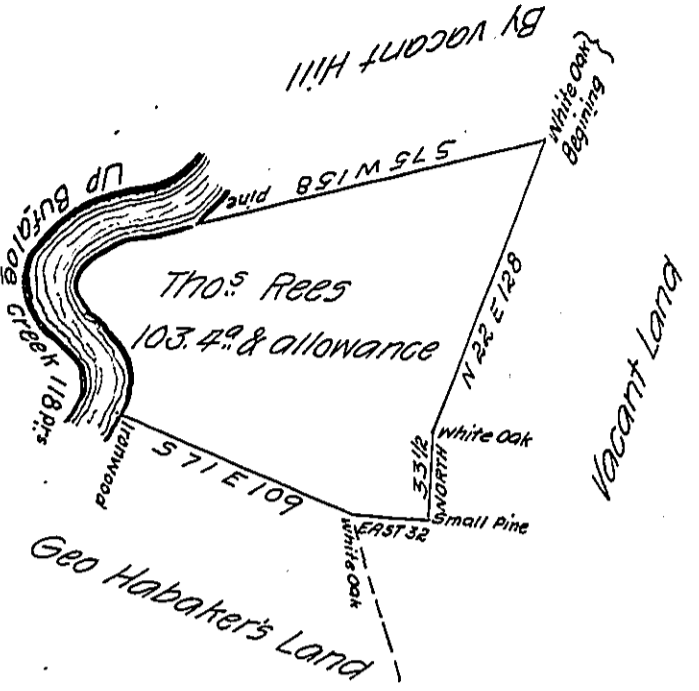


The several courses up the
Creek are S 72 W 46
S 17 W 20
S 46 E 30
S 7 W 22
118 Pts



The draught of a tract of land called — situate on Buffalo Creek in
Buffaloe Township Northumberland County containing one hundred & three
and seventy seven pms
acres, With the usual allowance of six p. cent for roads &c. surveyed Decbr. 3rd
1772 in pursuance of a warrant from the Honbl^o the Proprietaries to Thomas
Rees bearing date at Philad^o October 14th 1772.

To John Lukens Esq^r S.G. } P^r W^m Macclay D.S.
of Pennsylvania }

IN TESTIMONY that the above is a copy of the original remaining on file in
the Department of Internal Affairs of Pennsylvania, made
conformably to an Act of Assembly approved the 16th day of
February, 1833, I have hereunto set my Hand and caused
the Seal of said Department to be affixed at Harrisburg,
this fourteenth day of May 1906

Isaac B. Brown
Secretary of Internal Affairs.